

Rainbow Rural



OCTOBER 2024

SIMON'S INSIGHTS.....



Hello everyone, I hope this newsletter finds you well.

We're gearing up for the colder months here on the farm, this means coats, wellies, hats and gloves 'till spring. On the working farm side we will be preparing for the Rams to service the ewes (tupping) for the farm to have spring lambs. The trees and hedgerows are starting to change colour and shed their leaves. Many of the fruits from the hedgerows have disappeared now leaving the Rosehips to stand out. This means we can start to support the wild birds and other animals here on the farm with our bird feeders and trays.

Patrick's pumpkin patch looks ready for the picking, with decorative pumpkins and cooking winter squashes for us to use around Halloween or for soup through the winter.

With the wetter and colder months here, it's a brilliant time for groundwork. The ground is soft to work with and it helps keep you warm whilst outdoors. This means we can work towards building more animal paddocks and pens. We have some ideas and suggestions for possible additions to our farm animals here on the care farm, but we are always interested in your thoughts. If you have any suggestions feel free to let us know.

Thank you as always for your time and support towards us here at Rainbow Rural.

OUR



SHOP

RAINBOW RURAL

**MOST OF THE THINGS FOR SALE HERE HAVE BEEN MADE BY AND WITH
OUR CLIENTS**

**IF YOU WOULD LIKE TO BUY ANY OF OUR LOVELY CRAFTS PLEASE
E MAIL julie@rainbowrural.co.uk**

**We've added to our lovely
range of greetings cards, we
still have some of the lino print
ones for sale**



**We're making these nature
inspired ones as well**



**They're £10.00 for a pack of 5 assorted
designs**

**They're great if you would like to have
a stock of cards ready for your
upcoming occasions we can send them
out to you as well for a small fee!!**

**Would you like a bird box in
your garden?**



£6

Or a hedgehog house?



**Kindly made and donated by a
volunteer**

£25

No boot room or porch is complete without a boot puller.

We have 2 sizes
(for little boots and big boots!)
They come in random colours



£5

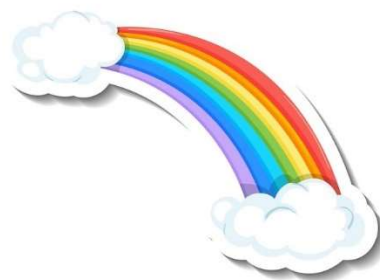
What about this amazing log store?



This has been made completely out of reclaimed wood

£50

Sadly it doesn't come complete with logs, you would have to cut your own!



**PLEASE
REMEMBER**

THE STOCK IN OUR SHOP HAS
BEEN MADE MOSTLY BY OUR
CLIENTS

WE ASSIST THEM HAND OVER
HAND TEACHING
WOODWORKING AND CRAFT
SKILLS

ALL OF THE MONEY FROM THE
SALE OF THESE ITEMS IS
CHANNELLED STRAIGHT BACK
TO THE WORKSHOP AND
CRAFTS DEPARTMENTS OF
RAINBOW RURAL

WE CAN POST THE CARDS OUT
TO YOU BUT WE WOULD NEED
YOU TO COLLECT THE LARGER
ITEMS

Rainbow Craft Workshop



From the 19th of November we're going to be running a weekly craft workshop in our classroom

From 11am to 1pm on Tuesdays you can come along and join in with all sorts of papercraft, lino printing, card making, knitting and of course lots of fun

This is a supervised group for people who bring a carer with them, instructions will be given on how to make the current project and when it's finished you can take your creation home with you

The cost for a session is £40 which includes all materials needed to make a project

If you don't want to keep your work you can donate it to the "Made By Us Tombola" which will be held on the open day next year

If you think you would like to join us on Tuesdays please send us an Email at [bookings @rainbowrural.co.uk](mailto:bookings@rainbowrural.co.uk) so that we can get to know you

This is a drop in drop out session class, no need to advance book, just let us know if you're coming the day before so we know to expect you and reserve you a place



DO YOU HAVE A CRAFT THAT YOU WOULD LIKE TO TEACH?

You can rent our beautiful classroom to run your lessons just e mail us for further information bookings@rainbowrural.co.uk

OUR CLASSROOM IS A LOVELY CLEAN SPACE THAT CAN BE USED FOR ALL MANNER OF CRAFT CLASSES, PRESENTATIONS OR GROUP MEETINGS.



RAINBOW RURAL PHOTO JOURNAL

We've been very busy again taking pictures in and around the farm. We hope you enjoy this photo journal that we've put together for you.

We had a lovely day this summer when ACCURO came to visit
Cameo's driving cart was very popular



We need a horse to pull this cart!



Hey guys..... I have an idea



Maybe some pushing will do the trick?



YAY!!! Walk on Patrick!!!



A favourite part of our late Summer Farm Club days is harvesting our summer seeds. The Lavender is beautiful, and the scent too. We hope to grow plants to sell next Spring? I was also told about a favourite craft, sewing Lavender pouches too! A nice thing to do in the Winter time.



It's a real pleasure for Sally my Lurcher dog, and I to walk our family farm and neighbouring farmer's footpaths. Sally particularly perks up with new sniff's 🐕! I also enjoy walking and looking at their crops and wildlife areas too. This was a small field left for habitat and wildflowers.



Snakes Head grass seed?



This plant really caught my eye
Identification?!!.



Thank you Dan and Paul for repairing our Bee Hives. We look forward to seeing a return of Bees. 🍯🐝

Here at Rainbow Rural we often hear and then see either, Great Spotted or Great Green Woodpecker's. They are so unique in their behaviour, and make me smile when I see them. A favourite place to see them is on Parker's Croft lawn, as they walk and look for food. Both types are beautiful in colour, with their low flight and sharp calls in flight. This old dead tree trunk shows their work looking for food and nest site?



Harvesting our Rainbow Rural Pumpkin's grown and looked after by us all



Beautiful harvest of Hawthorn Berries.



Winter coming so our spare Wellington Boots need cleaning and checking

WE HOPE YOU'VE ENJOYED LOOKING AT OUR PHOTO JOURNAL WE'VE CERTAINLY ENJOYED TAKING THE PICTURES.
IF YOU HAVE ANY PICTURES YOU WOULD LIKE US TO INCLUDE THAT YOU'VE TAKEN ON YOUR VISITS TO US WE'D BE VERY HAPPY TO PUBLISH THEM.
SEND THEM TO julie@rainbowrural.co.uk
IF THEY HAVE PEOPLE IN THEM DON'T FORGET TO ASK THEIR PERMISSION

IN LOVING MEMORY OF OUR DEAR LITTLE SUZIE CAT



For those of you who hadn't heard, we lost Suzie Cat earlier on this year,
She was old and unwell and needed to go to sleep.



Suzie is laid to rest in the Rainbow Garden with a rose to mark her grave.



SUZIE YOU ARE GREATLY MISSED



INDEPENDENT DAYS AT RAINBOW RURAL

A 10 WEEK COURSE FOR VULNERABLE PEOPLE WHO LIKE TO WORK WITHOUT A CARER

**WE HAVE A NEW 10 WEEK COURSE WHICH STARTS ON THE
8th OF NOVEMBER**

**WE STILL HAVE SOME PLACES LEFT, YOU CAN JOIN US FOR THE
COURSE, WE WOULD LOVE TO WELCOME YOU.**

Week 1-8th November

Week 2-15th November

Week 3-22nd November

Week 4-29th November

Week 5-5th December

Week 6-13th December

Week 7-20th December

Week 8-3rd January

Week 9-10th January

Week 10-17th January

THERE ARE 3 PLACES AVAILABLE

If you would like to join this group phone Simon for information

07873 232055

If you would like to come and join Farm Independent Days, we will invite you to meet us on a Friday to look around our Care Farm to make sure this will be suitable.

Email bookings@rainbowrural.co.uk for more information and to book a date for your visit

Additional questions can be answered by emailing simon@rainbowrural.co.uk or phone us on 07873 232055

(you may need to leave a message we might be instructing)

WE LOOK FORWARD TO MEETING YOU ALL

SUITCASE APPEAL

**HAS ANYONE GOT ANY
SUITCASES THAT THEY
NO LONGER NEED?
THE BIGGER THE BETTER
BUT NOTHING'S TOO
SMALL!**

**IF YOU DO HAVE ANY PLEASE
BRING THEM TO
RAINBOW RURAL WE HAVE A
VERY GOOD USE FOR THEM!
THANK YOU**



A BIG THANK YOU FROM US

We would like to thank everyone who is helping us in their own way

EVERYONE WHO HAS MADE A PAY PAL DONATION,

OR DIRECTLY TO US, OR VIA OUR WEB SITE

THANK YOU FOR CONTINUED SUPPORT FROM LOCAL BUSINESS

727 TOOL HIRE

ANGLIA LAND DRAINAGE

Mc CARTHY STONE

AGGREG8

MALONIES VETERINARY DUNMOW ROUND TABLE

TESCO & FAYRE SHARE

HORNSEA ANIMAL FEED

NATIONAL LOTTERY

FELSTED SCHOOL

ACER TREE SPECIALIST

DUNMOW FENCING

DUNMOW CHIP SHOP

MATT CROUCHMAN PLUMBING

LITTLE KAROO FARM

SORRY IF YOU'VE BEEN MISSED OFF OF OUR LIST GIVE US A NUDGE

AND WE'LL REMEMBER YOU NEXT TIME

If our newsletter has been forwarded to you and you would like

to keep up with us by joining our mailing list drop us a line

bookings@rainbowrural.co.uk

