

Rainbow Rural



JULY 2024

SIMON'S INSIGHTS.....



Hello everyone, I hope this newsletter finds you well.

As you can imagine the summer days are keeping us busy here on the care farm with predictable and not so predictable jobs. Firstly, the predictable work has been the shearing which besides Kingsley and Ali in the Rams pen is nearly complete. This is my second year shearing the flock and I have to admit it has been some of the most challenging work I have ever done. Certainly not the prettiest haircuts we've seen on a sheep, but I managed to learn more about mechanical and blade shearing

that I can carry through to next year's shearing.

For the unpredictable jobs, we've welcomed two new baby lambs to the farm. One of these surprise lambs was a Magpie Poll Dorset which is quite rare! As some of you may have noticed over the years, we have only one other sheep like this which is 'Magpie' on Front Field. As my other half has pointed out this new magpie lamb looks like a dairy cow, so if we were to name her, we would need to think of dairy cow names so please send us your suggestions.



SIMON

In memory of Ed Knight

It saddens me to be telling you, some of you may know, our amazing volunteer and supporter Ed Knight has passed away. Ed was an amazing man who had supported RR for many years and was a friend of the family. Some of you may remember our bicycle chariot event which Ed helped organise and build the bicycle chariots. He had an amazing impact on fundraising for RR and brought an energy unlike anyone else. We will miss him dearly.

Ed helped us organise one last event which is a bike ride event mentioned in the newsletter. If you would like to support this event, please do and maybe we can share some memories of Ed.



At The Countess of Warwick Show



The amazing 4 up bike that Ed and his brother built



Ed rode his Penny Farthing bike, which he built himself, on many charity and fun rides.

Dear Ed, you are going to be very much missed

UPCOMING DIARY DATES

THE WINDMILL 55 EVENT 14th July The “ACME” Audax Club Mid Essex



ACME is made of cycling enthusiasts most of whom live in mid-Essex or close by. Yes we like audaxing (extreme cycling for those who don't know!) and ride a variety of Audax UK (AUK) events across the UK and overseas, but we also like pubs, beer, cake, tearooms, touring and much more...see our web page for all of our upcoming events and for more information.

On the 14th of July we're setting out on the Windmill 55 event.

200km cycling event starting from Witham, Essex. Controls at Burwell, Elsenham, Rainbow Rural, Barnston and The Battersford Court, Witham., plus 6 information controls. A new start for this classic at the Battersford Court Wetherspoons, Newland Street, Witham CM8 1AH, as per the ACME Anvil Winter Series. Parking for £1 (payable in cash on the day) at the Witham Labour Club CM8 2EE.

Lots of info controls to take you to lots of windmills! Commercial controls at 84km and 157km with a special control at Rainbow Rural Care Farm near Barnston at 174km. Pub start and finish.

**Come along and meet the riders between 11.30 and 3pm, have some lunch and a cuppa with them at
The Rainbow Rural Care Farm Barnston CM6 1ND**

OUR



SHOP

RAINBOW RURAL

**MOST OF THE THINGS FOR SALE HERE HAVE BEEN MADE BY AND WITH
OUR CLIENTS**

**IF YOU WOULD LIKE TO BUY ANY OF OUR LOVELY CRAFTS PLEASE
E MAIL julie@rainbowrural.co.uk**

**We've added to our lovely
range of greetings cards, we
still have some of the lino print
ones for sale**



**We're making these nature
inspired ones as well**



**They're £10.00 for a pack of 5 assorted
designs**

**They're great if you would like to have
a stock of cards ready for your
upcoming occasions we can send them
out to you as well for a small fee!!**

**Would you like a bird box in
your garden?**



£6

Or a hedgehog house?



**Kindly made and donated by a
volunteer**

£25

No boot room or porch is complete without a boot puller.

We have 2 sizes
(for little boots and big boots!)
They come in random colours



£5

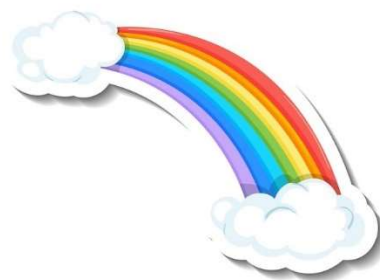
What about this amazing log store?



This has been made completely out of reclaimed wood

£50

Sadly it doesn't come complete with logs, you would have to cut your own!



**PLEASE
REMEMBER**

THE STOCK IN OUR SHOP HAS
BEEN MADE MOSTLY BY OUR
CLIENTS

WE ASSIST THEM HAND OVER
HAND TEACHING
WOODWORKING AND CRAFT
SKILLS

ALL OF THE MONEY FROM THE
SALE OF THESE ITEMS IS
CHANNELLED STRAIGHT BACK
TO THE WORKSHOP AND
CRAFTS DEPARTMENTS OF
RAINBOW RURAL

WE CAN POST THE CARDS OUT
TO YOU BUT WE WOULD NEED
YOU TO COLLECT THE LARGER
ITEMS

RAINBOW RURAL PHOTO JOURNAL

We've been very busy again taking pictures in and around the farm. We hope you enjoy this photo journal that we've put together for you.



The beautiful Horse Chestnut flowers, and a welcome sight for bees and other nectar seekers



Flock waiting for their fleece trim!



Great Crested Newt in the wrong place!



Ah, that's better. I will not get so hot now!



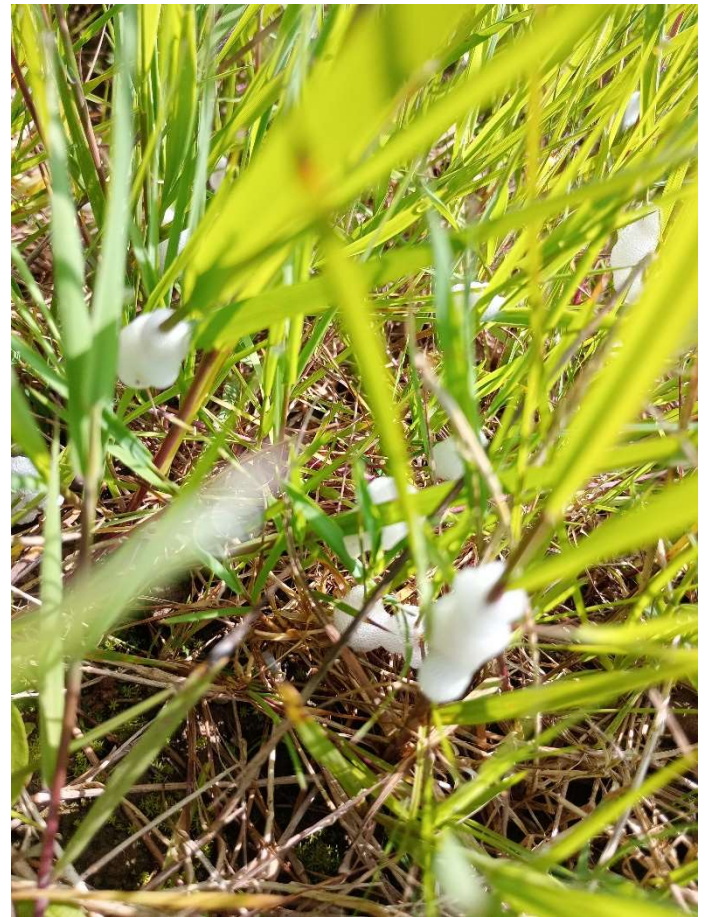
Great Crested Newt in the right place...outside near the pond 👍



Saturday Farm Club discovered these catapillar's whilst moving and watering pots of plants. They were quite hidden until we looked close. These are Large white butterfly caterpillar. We look forward to seeing them flying about soon.



Someone has found a 4 leaf clover!
This is the second one found at Sallet's!
Sadly never by me 😞. All our lovely
grass clover areas, if you have the
time? ...



An early morning walk showed this
strange scene? I know this as “Cuckoo
spit”.
It is caused by froghopper or spittlebug
nymphs.



Ah that's where it ended up! Perfect
😊



More evidence of wildlife as you walk. I
think it's a Kestrel feather? Maybe
flying and catching earlier?



With the rain recently we can see that we are not the only travellers on our footpaths. We have many Mount jack deer, and you can see some tracks quite clearly. Sallet's land has lots of excellent habitat for wildlife.



Warm wet weather during the spring encouraged the more traditional Autumn signs of fungi interestingly?



We have another new Blue Bell. There is a large wood on our neighbours farm, called Blue Bell wood. I think we are getting these lovely native flowers from seeds being transferred by birds? We will hope for more.



WE HOPE YOU'VE ENJOYED LOOKING AT OUR PHOTO JOURNAL WE'VE CERTAINLY ENJOYED TAKING THE PICTURES.

IF YOU HAVE ANY PICTURES YOU WOULD LIKE US TO INCLUDE THAT YOU'VE TAKEN ON YOUR VISITS TO US WE'D BE VERY HAPPY TO PUBLISH THEM.

SEND THEM TO julie@rainbowrural.co.uk

IF THEY HAVE PEOPLE IN THEM DON'T FORGET TO ASK THEIR PERMISSION



INDEPENDENT DAYS AT RAINBOW RURAL

A 10 WEEK COURSE FOR VULNERABLE PEOPLE WHO LIKE TO WORK WITHOUT A CARER

**WE HAVE A NEW 10 WEEK COURSE WHICH STARTS ON THE
30th of August**

**WE STILL HAVE SOME PLACES LEFT, YOU CAN JOIN US FOR THE COURSE,
WE WOULD LOVE TO WELCOME YOU.**

Week 1-30th August

Week 2-6th September

Week 3-13th September

Week 4-20th September

Week 5-27th September

Week 6-4th October

Week 7-11th October

Week 8-18th October

Week 9-25th October

Week 10-1st November

THERE ARE 3 PLACES AVAILABLE

If you would like to join this group phone Simon for information

07873 232055

If you would like to come and join Farm Independent Days, we will invite you to meet us on a Friday to look around our Care Farm to make sure this will be suitable.

Email bookings@rainbowrural.co.uk for more information and to book a date for your visit

Additional questions can be answered by emailing
simon@rainbowrural.co.uk or phone us on 07873 232055

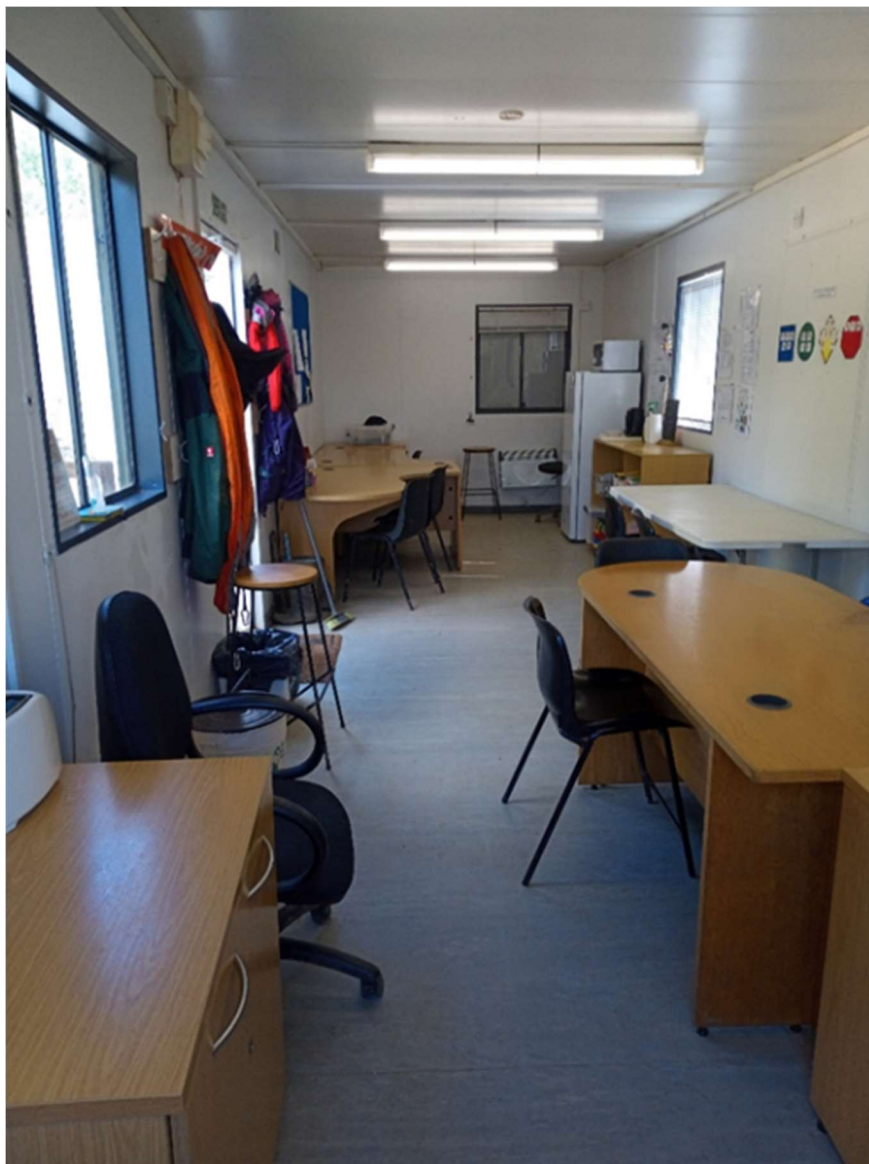
(you may need to leave a message we might be instructing)

WE LOOK FORWARD TO MEETING YOU ALL

DO YOU HAVE A CRAFT THAT YOU WOULD LIKE TO TEACH?

You can rent our beautiful classroom to run your lessons just e mail us for further information bookings@rainbowrural.co.uk

OUR CLASSROOM IS A LOVELY CLEAN SPACE THAT CAN BE USED FOR ALL MANNER OF CRAFT CLASSES, PRESENTATIONS OR GROUP MEETINGS.





A BIG THANK YOU FROM US

We would like to thank everyone who is helping us in their own way

EVERYONE WHO HAS MADE A PAY PAL DONATION,

OR DIRECTLY TO US, OR VIA OUR WEB SITE

THANK YOU FOR CONTINUED SUPPORT FROM LOCAL BUSINESS

727 TOOL HIRE

ANGLIA LAND DRAINAGE

Mc CARTHY STONE

AGGREG8

MALONIES VETERINARY

DUNMOW ROUND TABLE

TESCO & FAYRE SHARE

HORNSEA ANIMAL FEED

NATIONAL LOTTERY

FELSTED SCHOOL

ACER TREE SPECIALIST

DUNMOW FENCING

DUNMOW CHIP SHOP

MATT CROUCHMAN PLUMBING

LITTLE KAROO FARM

SORRY IF YOU'VE BEEN MISSED OFF OF OUR LIST GIVE US A NUDGE

AND WE'LL REMEMBER YOU NEXT TIME

If our newsletter has been forwarded to you and you would like

to keep up with us by joining our mailing list drop us a line

bookings@rainbowrural.co.uk